



Schools Sharemarket Game

PLAY THE GAME!



INTRODUCING THE GAME

Quickstart lesson 1

Includes: Student lessons . Teacher notes & answers

ASX Schools Sharemarket Game

Quickstart Teacher Notes: THE GAME

Introduction to Teacher Lesson Plans

These lesson plans include 3 Quickstart and 4 supplementary lessons.

The Quickstart lessons are intended to help you introduce the sharemarket and the Game as well as give students guidance on how to get started in 3 quick lessons. These 3 lessons can stand alone as they will equip students with enough information to get started in the Game, research companies and decide on a strategy.

The supplementary lessons are in no particular order so you can choose which lessons to do with your students.

The lessons have also been designed so that if you want, students can work through them on their own.

Each lesson includes additional resources – which can be added to the lesson.

The lessons are as follows:

Quickstart lesson 1: The ASX Schools Sharemarket Game

Quickstart lesson 2: Researching a company

Quickstart lesson 3: Your Game plan

Supplementary lesson 1: Using the ASX charts

Supplementary lesson 2: Managing Risk: diversification and sectors

Supplementary lesson 3: Impact of the economy and global events

Supplementary lesson 4: History – booms & busts

The organiser of the ASX Schools Sharemarket Game is ASX Operations Pty Limited ABN 42 004 523 782, 20 Bridge Street, Sydney, NSW 2000.

The Game and information provided in relation to the Game (including the teacher resources) are provided for educational purposes only. Such information including, without limitation, lesson plans, presentations and worksheets, is general and does not constitute financial product advice or a recommendation of any financial products (and should not be relied upon as such). Persons should consider obtaining independent, expert advice before making any financial decisions.

Whilst every care has been taken in producing information in relation to the Game; neither ASX Operations Pty Limited, nor ASX Limited, nor any of their related bodies corporate (the "ASX Group") make or imply any representation or warranty as to the reliability, accuracy, or completeness of such information.

To the extent permitted by law, the ASX Group is not liable for any loss incurred by anyone arising from or in relation to their participation in the Game or acting or refraining from acting as a result of this information, other information in relation to the Game or the teacher resources.

The ASX Group accepts no responsibilities for incomplete, late, lost, corrupted, misdirected, misplaced or destroyed registrations.

© 2020 Copyright. ASX Operations Pty Limited ABN 42 004 523 782. All rights reserved.

ASX Schools Sharemarket Game

Quickstart Teacher Notes: THE GAME

The Sharemarket Game

Introduction:

This lesson introduces the sharemarket, ASX and the Sharemarket Game.

Students are shown around the Game. They will become more familiar with the Game play pages by watching 4 short tutorials including the Game dashboard, Finding their way around the Game, How to buy and a Portfolio tutorial.

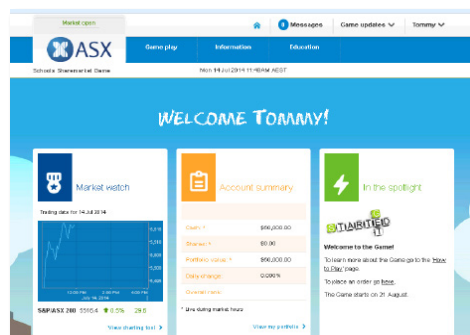
Lesson Design:

Online lesson

Expected Learning Outcomes:

Students will:

- 1) Understand the function of the Sharemarket and ASX
- 2) Understand how to buy and sell shares
- 3) Be able to start playing the Sharemarket Game
- 4) Understand basic sharemarket terminology



PRIOR TO LESSON

For this lesson, students will need to be able to log into their Game pages. This means you will need to set up student syndicates prior to the lesson, so that you can give them their Login ID and password. (Please highlight that students need to keep this information safe.)

Overview of Student Lesson:

- 1) Read through the introduction together (pg S.1). Discuss the similarities of a market such as eBay and the sharemarket.
- 2) **Optional Activities:** Run an auction with the students / Play audiovisual: What is the sharemarket? (see Additional Resources)
- 3) Introduce the Game by getting students to read **'The Game'** (pg S.2).
- 4) Students need to login and go to the **'How to play'** page (Under Information menu) and complete tasks (pg S.3 – S.5). If there are download problems with the tutorials, the other option is to watch them together as a class and answer the questions. They can then go to their Game Dashboard, have a look around.
- 5) **Resources Page:** **'Helpful things to know'** (pg S.6 – S.7) read together or set for homework. (The homework task – 'Investigate questions' are relevant to these pages.) You might like to have a quiz at the start of the next lesson to check student knowledge.
- 6) Set homework: **'Investigate'** task (pg S.8 – S.9).



ADDITIONAL RESOURCES

See **Teacher Resources page** – www.asx.com.au/teacherresources

Auction Activity: This is an optional activity for this lesson.

Audio Visual: What is the Sharemarket?

ASX Schools Sharemarket Game

Quickstart Teacher Notes: THE GAME

Answers

'Dashboard' tutorial (S3)

- a) The dashboard
- b) Click on the house icon
- c) Teacher messages at the top of the page and Game messages – in the spotlight box.
- d) Under Information – How to play and FAQ pages.



'Finding your way around the Game' tutorial (S3/S4)

- a) Go to Game play and scroll down to company list.
- b) Industry type
- c) You will need to go to the energy and real estate sectors – to see if students have chosen the correct companies.
- d) If you want to learn more about a company click on the company name (on other pages the ASX code), this will take you through to a Company details page?
- e) A watchlist is a tool which helps you monitor the performance of shares that you are interested in.
- f) From the Company list page, the Company details page or the Portfolio page, students can select the plus button to add a company to their watchlist.
- g) Dividends are payments from listed companies where they share their profits with shareholders.
- h) On the dividends plus page under 'Future dividend payments and other corporate actions affecting your portfolio.'
- i) Go to Game play and scroll down to rankings
- j) List the different types of ranking you can see – Overall, State / NZ / International, School, Year, Subject.

'How the to buy' tutorial (S5)

- a) Go to Game play and then select place an order
- b) On the right hand side of the Place an order page once you have added your company (diversification also gives the last price). Last price can also be found on the Company details page and the watchlist page.
- c) A market to limit order and a limit order
- d) It's important you check your order details, because once an order is submitted, it may be very difficult to cancel or amend as orders can be processed almost immediately.
- e) Pending orders page
- f) Yes
- g) 1) To increase the number of shares you are buying or selling. 2) To change the price. 3) To change the order type. 4) If you have run out of cash.

ASX Schools Sharemarket Game

Quickstart Teacher Notes: THE GAME

Answers (CONTINUED)

'Portfolio tutorial' (S5)

- a) The Transactions page
- b) DIV under buy/sell column and a comment in notes section.
- c) Portfolio page
- d) Under holdings on the portfolio page

'Investigate' (S8)

- 1)
 - a) Seven Group Holdings
 - b) Wesfarmers
 - c) Coca-Cola Amatil
 - d) Qantas Airways
 - e) Cochlear
 - f) Bega Cheese
- 2)
 - a) A stockbroker charges a fee when a trade is placed – this is their fee for buying or selling shares on your behalf. To find out more about brokerage costs in the Game go to the FAQ page.
 - b) To diversify simply means to invest in different companies and/or different industry sectors that don't tend to move in the same direction at the same time.
 - c) Maximum amount – \$12,500
 - d) You can put your order in at any time; however, as the market is only open between the hours of 10am and 4pm Sydney time, your orders will only be processed over this time. Please note: If students want to place a trade for the next day, they need to do it after 4.12 PM. The market closes at 4pm however there is a clearing period where trades can still be processed.
 - e) Market to limit order – To explain a 'market to limit' order it helps to provide some background.

Some stocks can be quite illiquid which means there are not many shares available and also at times the market can be very volatile. If there is a sudden drop in the market all the buyers can rapidly disappear and prices can gap dramatically. This happened in the global financial crisis.

Previously, if you put in an order to buy "at market" you were saying I want to buy this number of shares and I don't care how much I have to pay to get them. As a seller you were saying I want to sell this amount of shares and I don't care how little I get for them. This might be alright in a normal market where there are lots of buyers and sellers and the gap between the buy price and the sell price is small (the bid ask spread). But when markets are volatile it can be a different story. Consider when markets went into freefall during the financial crisis. If you put had put in a market order to sell you could have ended up selling for a fraction of what you really expected to get.

This is why the 'market to limit' order was introduced.



ASX Schools Sharemarket Game

Quickstart Teacher Notes: THE GAME

A market to limit order, as the name suggests, is a mix of both a market order and a limit order. When you place your order it acts as a market order and fills as much of your order as it can at the current market price. However, if not all your order is filled at the current price it won't keep buying at higher prices or selling at lower prices. Instead the order will change to a limit order at the current market price.

Students will need to check their order (on their Pending orders page) to see whether it got filled or only part of their order was filled.

If the order has only been partly filled, this means the remaining unfilled part of their order, is now in pending orders as a limit order?

They can either:

- 1) Amend their order and change it back to a market to limit order
- 2) or they can leave it as a limit order but at a price they think it is likely to get filled at.

If students get frustrated with market to limit orders, you might suggest they stick with limit orders but at a price a bit higher than the current market if buying or a bit lower if selling. The order will still execute at the best price but gives them more scope to get all of their order filled straight away. It is also a good discipline as it makes them consider what is the most they are prepared to pay for these shares and what is their lowest price to sell?

3) Types of Stockbrokers:

Full service brokers: Have an in-house research team that give recommendations; clients have their own personal broker and help is given with investing. Tend to charges higher fees.

Discount brokers: A discount on brokerage fees is given in exchange for not providing research on companies. Instead clients do their own research. The client may be given a list of recommended stocks to research.

Online brokers: Usually they charge the lowest brokerage but the client must know investment basics because everything is done online by the user.

ASX Schools Sharemarket Game

Student Lesson: THE GAME

The Sharemarket Game!

In this lesson you will learn about the sharemarket and how you can play the Sharemarket Game by investing \$50,000.

What is the sharemarket all about?

A **share** is a unit of ownership in a company.

The **sharemarket** is where the buying and selling of company shares takes place, in this case through ASX – the Australian Securities Exchange.

The sharemarket has similarities to an auction. Where buyers compete by raising their bids and sellers compete by lowering their offers.

An example of this is **eBay**. When a person is selling a product on eBay, they want to sell for the highest price possible. The person buying wants to pay the lowest possible price to save some money. They hope that no one comes in to bid against them because this will push the price up.

A fruit market is another example. All the sellers compete by offering lower prices for their produce while buyers must be prepared to pay more to get what they want.

In each example when both the buyer and the seller agree on a price, the trade occurs.

A **bid** is the price a buyer is willing to pay for a particular share.

TO FIND OUT MORE ABOUT THE ASX:
www.asx.com.au



ASX Today

Today there are over 2,200 Australian companies listed on ASX. These companies are divided into sectors. These are similar industries that have been grouped together; for example banks, insurance and real-estate are grouped into the finance sector. You will learn more about sectors later.

A company can raise money to grow its business by 'going public'. This means issuing shares to investors and then being listed on the stock exchange. By paying for the shares, **each investor buys part ownership of the company's business** and becomes a shareholder of the company.

After the shares have been issued they can then be sold to other investors on the sharemarket. In this way, a shareholder can potentially make a profit by selling their shares for more than they paid for them.

You buy or sell shares by using a stockbroker. Stockbrokers buy and sell shares in the market on behalf of investors. A brokerage fee is charged by the stockbroking firm for buying and selling the shares on their client's behalf.

Share trading takes place during ASX trading hours – 10am to 4.00pm weekdays.

Company
goes public

Sells shares
to investors

Investor buys
shares & becomes
shareholder

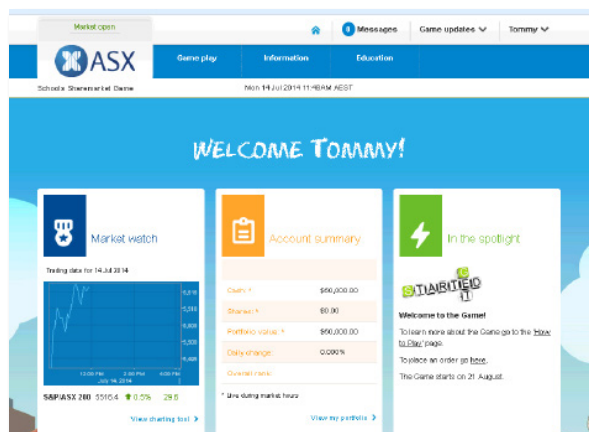
Shares rise/fall
and investor sells
for profit/loss

Another investor
buys shares

ASX Schools Sharemarket Game

Student Lesson: THE GAME

The Game!



This is your chance to buy and sell shares in the sharemarket – hypothetically of course. In the Sharemarket Game you get \$50,000 to spend on buying or selling shares.

Today you will learn more about how the Game works so that you can jump in and test it out yourself. The Game runs for 10 weeks and there are some pretty good prizes...like cash!

The Game follows the live sharemarket. This means that if BHP shares are worth \$35.00 in the live market, this is what you may buy or sell them for in the Game.

If BHP shares move up or down in price, this is also what will happen to the value of your shares.

This is as close as you can get to real life trading.

So let's take a look at the Game...first of all you need to login.

1) How to login:

1. Go to <https://www.asx.com.au/education/sharemarket-game.htm>
2. Click on the 'Student login' button
3. Enter the Login ID and Password provided by your teacher

ASX Schools Sharemarket Game

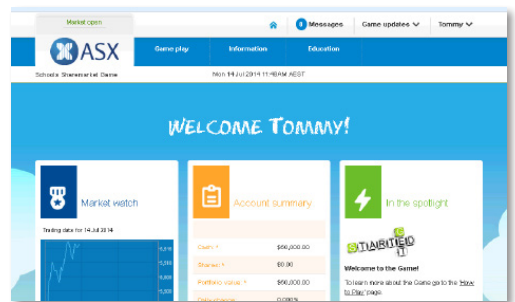
Student Lesson: THE GAME

Go to the [How to play page](#) (Under the Information tab) and complete activities 2 to 4.

2) Watch the 'Dashboard tutorial'

(Tutorials will be at the top of the page).

Answer the following questions:



a) When you log into the Game what will be the first page you will always land on?

b) If you navigate away from the dashboard and want to return, how do you do this?

c) Where can you see messages from your teacher or important Game updates?

d) If you need extra help, where can you find this?

3) Watch 'Finding your way around the Game' tutorial

(Tutorials will be at the top of the 'How to play' page).

Answer the following questions:

a) Where can you find the company list?

b) What is another word for sector?

c) List 2 companies in the energy and real estate sectors.

d) How can you find out more information about a specific company?

ASX Schools Sharemarket Game

Student Lesson: THE GAME

e) Why would you use a watchlist?

f) How do you create your watchlist in the Game?

g) What is a dividend?

h) Where can you see the dividends that are coming up?

i) Where can you find your ranking?

j) List the different types of ranking in the Game.



ASX Schools Sharemarket Game

Student Lesson: THE GAME

Watch 'How the to buy' tutorial

(Tutorials will be at the top of the 'How to play' page).

Answer the following questions:

a) How do you get to the order page?

b) Once you have selected a company where can you find the last price of a share?

c) What are the two 'order types' you can choose from?

d) Why is it important to check your order before submitting?

e) Once an order is submitted, where can you find it?

f) Can you delete or change your order?

g) Give 4 reasons why you might you need to change (amend) an order?

Watch the 'Portfolio tutorial'

(Tutorials will be at the top of the 'How to play' page).

Answer the following questions:

a) Where can you find details of all the shares you have bought or sold as well any corporate actions?

b) How will a dividend show up on your transaction page?

c) Where can you see your available cash, shares and your total portfolio value?

d) Where can you view all the stocks that you presently own in the Game?

'A Game Tip'

On your Transaction Page, you might notice that your order has been processed in a number of transactions. This is because it is matching orders in the live market and it may take a few transactions for the whole order to be filled.

ASX Schools Sharemarket Game

Student Lesson: THE GAME

Helpful things to know

Shares are bought and sold using a stockbroker. A stockbroker acts as an agent to buy or sell shares on a person's behalf. This can be done either online or over the phone. The Game simulates buying and selling online.

What is brokerage?

There is no fee when an order is placed but when that order is filled and a trade occurs the stockbroker will charge a fee – this is their fee for buying and selling the shares. The brokerage charge can vary depending on the type of broker a person is using.

To find out more about brokerage costs in the Game go to the Game FAQ page.

You need to take brokerage into consideration when buying and selling as this is an additional cost that you will pay every time an order is completed to buy or sell shares. Be careful that you don't eat into your profits by buying and selling too much because you will end up paying a lot of brokerage.

What is an order?

An order in the sharemarket is the request that you put in to either buy or sell a certain number of shares in a particular company. Let's take a look at an order in the Game.

Here you can see we have an order to buy 250 CBA shares using a market order.

You can enter either a market to limit order or a limit order as highlighted in the tutorials **How to buy** and **how to sell**. Let's take a look at the difference.

Market to limit orders

Knowing which type of order to use is important so you need to understand how they work.

Are you going to go into the market saying I don't care what I have to pay if buying or I don't care what I get for these shares if selling? Or do you have a price in mind?

If the market is falling quickly, and this can happen when investors get spooked, then you might find that if you are selling that you get much less than you expected. Or if a stock takes off due to some good news you might pay much more than you expected. Market to limit orders help you to avoid this situation.

When you enter a market to limit order you don't nominate a price to buy at or to sell at. Instead your order will be filled, as much as it can be, at the current market price then it becomes a limit order.

For example: Suppose you wanted to buy 5,000 shares in XYZ company but there were only 4,000 shares available at the current market price. The system would purchase 4,000 shares for you at the current market price, say \$10.00 and then for the remaining 1,000 shares your order would become a limit order for 1,000 shares at \$10.00. These shares will only be processed if the price stays at \$10.00 or less. If your order is not being processed it may be that the price has moved above \$10.00. **You can check your pending orders to see if that is what has happened.** You can either reactivate the order by clicking amend and making it a market to limit order again or alternatively you can keep it as a limit order but change it to a price you are happy to buy at.

Place an order

This is where you enter your buy and sell orders. *Please note: If your 'cash on hand' is below \$20, you can still sell and brokerage will be taken out once your shares have sold. Always check your order before submitting. For additional help please read [How to place an order](#).

Order to

Buy ☒ Sell ☐

Order details

Code/Company: ABC - ADELAIDE BRIGHTON LIMITED

Code: ABC

Company name: ADELAIDE BRIGHTON LIMITED

Last sale price: 5.46

Number of shares: 500

\$+/-

%+/-

Order type

Market to limit ☒ Limit ☐

Order type

Market to limit ☒ Limit ☐

Message: You have 2264 available units @ 5.46 to buy under the diversification rule.

ASX Schools Sharemarket Game

Student Lesson: THE GAME

Helpful things to know (CONTINUED)

Limit order

Limit orders let you specify the maximum price you are prepared to pay for shares if buying or the lowest price you are prepared to accept if selling.

Order type

Market to limit ☐

Limit ☒

Limit order \$

Your order will be executed at the best price possible. Suppose you want to buy at a limit of \$10.00. You will get them at a lower price if there are shares available at a lower price, but if the price is above \$10.00 your order won't be filled.

If you are prepared to sell at \$10.00 but no lower you might end up selling at say \$10.50 if prices are higher but not at \$9.50 because that is below your limit.

Make sure you are clear what price you are prepared to accept when you put your order in.

If you don't like the idea of a market to limit order you might consider using a limit order but make sure the price you set it is not too far away from the market otherwise your order might not get filled.

Can you put all your money into buying one company?

You can do this in real life if you wish; however, there is a belief that this is not the best thing to do as it is very high risk.

In the Game there is a diversification rule that stops you from being able to put all your money into one company. You can only invest 25% (of your total portfolio value) in any one given company. When you go to place an order to buy shares in a company, the system will tell you how many shares the diversification rule will let you buy, based on the current market price and your portfolio value. You don't have to buy that number- you can buy less but you can't buy more. To diversify simply means to invest in different companies and/or different industry sectors that don't tend to move in the same direction at the same time.

This will help reduce your risk of losing money. Let's say you invested all of your \$50,000 in one company and the shares in this company dropped by 30%. This would mean that your \$50,000 investment is now worth only \$35,000 – that's a loss of \$15,000. Whereas, if you invested in 4 companies (in different sectors with approximately \$12,500 invested in each) and the other 3 companies are doing OK, that 30% loss is now only \$3,750 – quite a difference.

Remember, no one knows for certain how different companies or industries are going to perform in the future. So investing in a range of sectors helps reduce risk. Be careful of over diversifying (having just a few shares in a lot of different companies) – because you will end up paying a lot of brokerage and if some companies do really well you want to own enough of them to make some good profits.

Can I trade any time through the day or night?

You can put your order in at any time; however, as the market is only open between the hours of 10am and 4pm Sydney time, your orders will only be processed over this time.

Tip: If you want to place a trade for the next day, do it after 4.12 pm. The market closes at 4pm however there is a clearing period where trades can still be processed.

To sum up:

Don't put all your eggs into one basket, but don't overdo it on the baskets.

ASX Schools Sharemarket Game

Student Lesson: THE GAME

Investigate:

1) Find out which listed companies are associated with the following products or services:
(You will need to search other sites for this information.)

a) My Kitchen Rules

b) Bunnings Warehouse

c) Powerade

d) Jetstar

e) Hearing aids / implants

f) Vegemite



2) a) What is brokerage and how much brokerage is charged in the Game?

b) What is diversification?

c) With a portfolio value of \$50,000 what is the maximum amount that you can put into any one company?

d) Can you trade at any time?

e) What is the difference between a market to limit and a limit order?

ASX Schools Sharemarket Game

Student Lesson: THE GAME

Investigate: (CONTINUED)

3) There are different kinds of stockbrokers, see if you can find out what they are called and why they are different?

4) Ask your parents or your grandparents if they have any investments or made any investments in the past?
Do they think these have been a good investment?

